



POWDER COATINGS



Discover
the world of
colours

PARTH CHEMTECH

We are one of the leading manufacturers of high quality and durable Powder Coatings in India under the brand name "NiceCoat". We are an ISO 9001 certified company having a decade of experience behind us in this field. We have established ourselves as a leading brand in the Powder Coatings market.

We offer a wide range of different shades of Powder Coatings in the variety of Chemistries, different finishes i.e. Glossy, Semi-glossy, Matt, Texture, Structure and Antique which are available in all colours and Gloss levels for almost any type of interior or exterior applications.

We put in our best efforts to provide qualitative solutions in a cost-effective manner, As a key supplier to your operations, we have got exactly what it takes to be a partner in your success. Totally committed to the integrated growth, we continue to develop new shades and finishes and provide quality products at very competitive prices. Our marketing network spans across the entire country, in every city of each state which has assured a significant market share for our quality products.

ISO 9001:2008 CERTIFIED COMPANY



DON'T DISMISS SURPRISINGLY VERSATILE GREY

Sophisticated and striking, grey goes with almost anything. Grey can be industrial, romantic or daringly modern. greys are subtle and sophisticated and work beautifully with natural materials and soft textures.



Caters to Furniture, Electrical, Agricultural, Appliances, Architectural, Automotive & General Metal Products.

GLOSSY



CLASSIC WHITE (G325-HB)



RAL7035 GREY (G187-HB)



LIGHT GREY (G341-HB)



WHITE (G350-HB)



HAVELLS GREY (G124-HB)



SMOKE GREY (G137-HB)



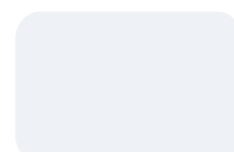
PURE WHITE (G102-HB)



MUNSHELL GREY (G321-HB)



SIEMENS GREY (G322-HB)



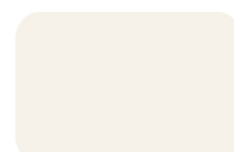
MILKEY WHITE (G329-HB)



D.A.GREY (G103-HB)



RAL7032 GREY (G338-HB)



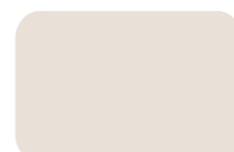
LIGHT IVORY (G327-HB)



M.D.GREY (G121-HB)



GREY (G265-HB)



DARK IVORY (G328-HB)



RAL7016 GREY (G173-HB)



DARK ANTILOPE GREY (G221-HB)



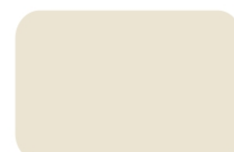
DARK IVORY (G352-HB)



USHA BEIGE (G274-HB)



GREEN (G268-HB)



IVORY (G229-HB)



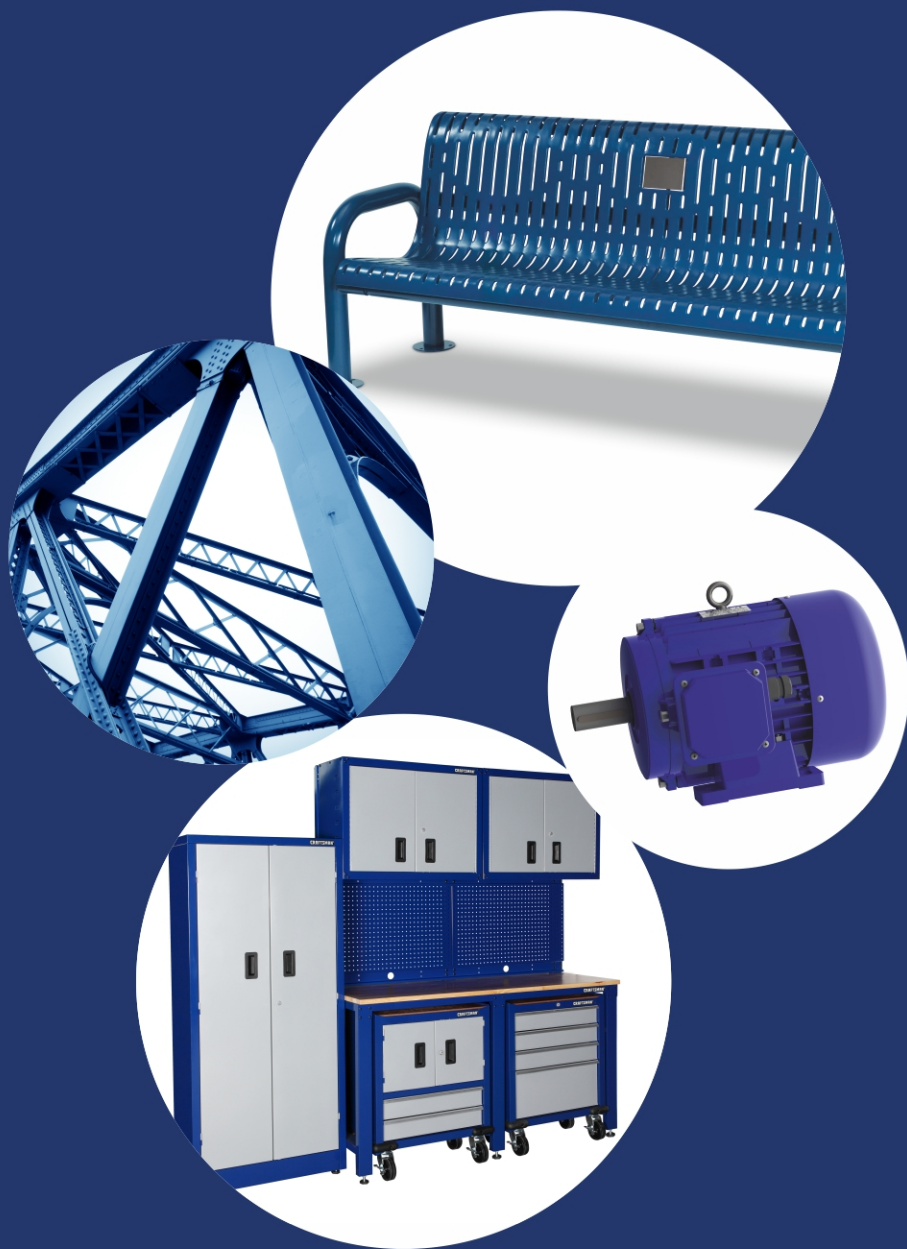
MICRO IVORY (G175-HB)



RASIDA GREEN (G261-HB)

NO WONDER BLUE IS MOST POPULAR

Blue has a sophisticated, luxurious feeling. It offers a purity and sense of stability that relates directly to the eternal beauty of the sea and the sky.



Caters to Furniture, Electrical, Agricultural, Appliances, Architectural, Automotive & General Metal Products.

GLOSSY



PISTA GREEN (G340-HB)



LIGHT SKY BLUE (G313-HB)



KANGARO BLUE (G233-HB)



RELIANCE GREEN (G178-HB)



RAL5012 BLUE (G163-HB)



WILD LILAC (G345-HB)



WATER BLUE (G174-HB)



DEEP BLUE (G342-HB)



BLUE (G219-HB)



PARROT GREEN (G262-HB)



PANTONE BLUE (G204-HB)



RAL5002 BLUE (G282-HB)



RAL6018 GREEN (G216-HB)



RAL5017 BLUE (G171-HB)



RAL5022 BLUE (G284-HB)



RAL6032 GREEN (G336-HB)



RAL5009 BLUE (G283-HB)



V.I.P. BLUE (G140-HB)



RAL6029 GREEN (G148-HB)



RAL5005 BLUE (G220-HB)



PEPSI BLUE (G120-HB)



BUS GREEN (G344-HB)



TRAFFICE BLUE (G349-HB)



OXFORD BLUE (G348-HB)

CHOCOLATE BROWN, THE ABILITY TO TRANSFORM

Deep chocolate shades are always warm & inviting. Transforms any surface into an opulent and sophisticated space, it creates a cosy and inviting feel and will not only look richer, but will boost the intensity of others shades too.



Caters to Furniture, Electrical, Agricultural, Appliances, Architectural, Automotive & General Metal Products.

GLOSSY



SAFEX RED (G108-HB)



RAL1017 YELLOW (G203-HB)



WOOD BROWN (G312-HB)



SIGNAL RED (G333-HB)



RAL1028 YELLOW (G170-HB)



RED BROWN (G244-HB)



P.O.RED (G332-HB)



DEEP ORANGE (G106-HB)



NUT BROWN (G128-HB)



RUBBIN (G147-HB)



PISTAL ORANGE (G335-HB)



SHILSTONE BROWN (G285-HB)



ROSE PINK (G246-HB)



OLIVE YELLOW (G232-HB)



CHOCOLATE BROWN (G115-HB)



ELECTRIC RED (G253-HB)



SF YELLOW (G217-HB)



BROWN RED (G256-HB)



MAROON (G331-HB)



GOLDEN YELLOW (G351-HB)



B.C.B. (G310-HB)



RAL4003 VIOLET (G205-HB)



JASMIN YELLOW (G123-HB)



BLACK (G311-HB)

REVIVE YOUR SENSES WITH TURQUOISE GREEN

Nature's own instant shot of energy: refreshing and reviving turquoise green. It's rich and dramatic but it also feels welcoming and creates an instant sense of tranquillity.

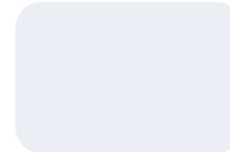


Caters to Furniture, Electrical, Agricultural, Appliances, Architectural, Automotive & General Metal Products.



POWDER COATINGS

MATT



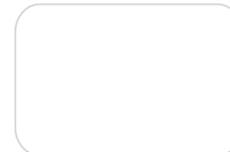
WHITE (M2383-HB)



RAL6033 GREEN (M2024-HB)



KANGAROO BLUE (M2037-HB)



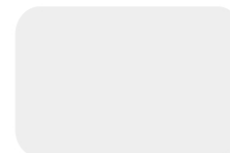
OFF WHITE (M2103-HB)



TURQUOISE GREEN (M2112-HB)



KANGAROO BLUE (M2119-HB)



RAL9016 WHITE (M2038-HB)



RAL6028 GREEN (M2125-HB)



HYM BLUE (M2015-HB)



DARK IVORY (M2132-HB)



RAL6029 GREEN (M2020-HB)



V.I.P.BLUE (M2554-HB)



RIDDHI GREY (M2001-HB)



RAL5021 BLUE (M2144-HB)



CORPORAT BLUE (M2033-HB)



RAL7035 GREY (M2145-HB)



D.A.GREY (M2552-HB)



RAL5012 BLUE (M2030-HB)



MUNSHELL GREY (M2551-HB)



M.D.GREY (M2116-HB)



CON BLUE (M2009-HB)



DEEP GREY (M2011-HB)



HOF GREY (M2140-HB)



HART BLUE (M2019-HB)



POWDER COATINGS

SAY HELLO TO SPRING WITH VIBRANT BROWN

Looking for new beginnings? Say hello to VIBRANT BROWN that stands for renewal, optimism and the vibrancy of life.



MATT



BEIGE (M2553-HB)



RAL8012 BROWN (M2022-HB)



RAL1003 YELLOW (M2143-HB)



BROWN YELLOW (M2152-HB)



NUT BROWN (M2210-HB)



RAL3001 RED (M2138-HB)



BUFF YELLOW (M2615-PP)



CHOCOLATE BROWN (M2104-HB)



DEEP ORANGE (M2107-HB)



WOOD BROWN (M2149-HB)



B.C.B. (M2382-HB)



BLACK-SPL. (M2003-HB)



RED BROWN (M2302-PE)



DEAD BROWN (M2305-PE)



DEAD BLACK (PE2301-PE)

SEMI GLOSSY



NEW IVROY (S1504-HB)



H.BROWN (S1050-HB)



MACHINE GREEN (S1308-HB)



SIEMENS GREY (S1501-HB)



DARK BLUE LILAC (S1054-HB)



PATINA GREEN (S1053-HB)



GEB GREEN (S1064-HB)



RUBBIN (S1066-HB)



BLACK (S1303-HB)

Caters to Furniture, Electrical, Agricultural, Appliances, Architectural, Automotive & General Metal Products.

GRAY IS AN INTERMEDIATE COLOUR BETWEEN BLACK AND WHITE

Gray is a cool, neutral, and balanced colour. The colour gray is an emotionless, moody colour that is typically associated with meanings of dull, dirty, and dingy, as well as formal, conservative, and sophisticated.



Caters to Furniture, Electrical, Agricultural, Appliances, Architectural, Automotive & General Metal Products.



POWDER COATINGS

STRUCTURE



PURE WHITE (ST3146-HB)



RAL7035 GREY (ST3145-HB)



SIEMENS GREY (ST3041-HB)



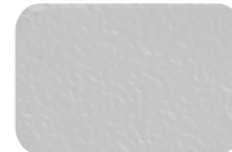
ULTRA WHITE (ST3148-HB)



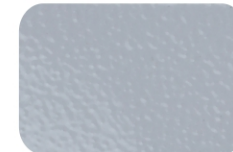
HAVELLS GREY (ST3107-HB)



SIEMENS GREY (ST3432-HB)



BROKEN WHITE (ST3408-HB)



RAL7035 GREY (ST3073-HB)



RAL7032 GREY (ST3032-HB)



MARBAL WHITE (ST3105-HB)



STEEL GREY (ST3115-HB)



SIEMENS GREY (ST3405-HB)



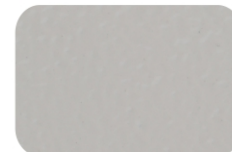
RAL9002 GREY (ST3034-HB)



MUNSHELL GREY (ST3407-HB)



DARK GREY (ST3114-HB)



IVORY (ST3200-HB)



RAL7000 GREY (ST3077-HB)



RAL7016 GREY (ST3138-HB)



LIGHT IVORY (ST3123-HB)



DUSTY GREY (ST3119-HB)



HOF GREY (ST3008-HB)



DARK IVORY (ST3133-HB)



D.A. GREY (ST3410-HB)



RAL7021 GREY (ST3214-HB)



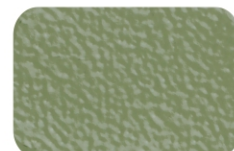
POWDER COATINGS

USHER IN THE FESTIVITIES WITH GREEN

Green is the colour of happiness and naturalism. When it comes to decorating, no colour stirs up passion like green.



STRUCTURE



PALE GREEN (ST3206-HB)



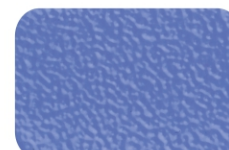
MAC BLUE (ST3010-HB)



DEEP BLUE (ST3121-HB)



IS-275 GREEN (ST3116-HB)



KANGARO BLUE (ST3037-HB)



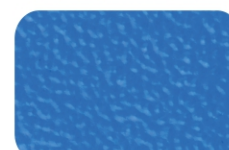
RAL5015 BLUE (ST3174-HB)



IS-281 GREEN (ST3003-HB)



WILD LILAC (ST3106-HB)



V.BLUE (ST3089-HB)



MACHINE GREEN (ST3048-HB)



LIGHT GREY (ST3409-HB)



RAL5019 BLUE (ST3209-HB)



RAL6010 GREEN (ST3094-HB)



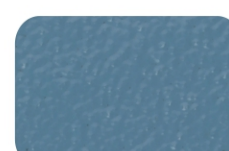
RAL6033 GREEN (ST3222-HB)



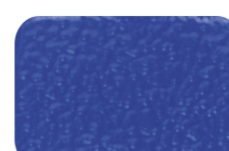
RAL5005 BLUE (ST3215-HB)



RAL6002 GREEN (ST3191-HB)



SMOKE GREY ST. (ST3043-HB)



V.I. BLUE (ST3103-HB)



WATER BLUE (ST3149-HB)



BLUE (ST3172-HB)



PEPSI BLUE (ST3152-HB)



PARROT GREEN (ST3047-HB)



BLUE (ST3205-HB)



OXFORD BLUE (ST3113-HB)

Caters to Furniture, Electrical, Agricultural, Appliances, Architectural, Automotive & General Metal Products.



POWDER COATINGS

LIGHT UP YOUR LIFE WITH ORANGE

If you want positivity flowing, introduce the Orange accents. Warm, Welcoming and cheerful, orange evokes up thoughts of sunny days, freshly picked fruits and golden autumn leaves.



STRUCTURE



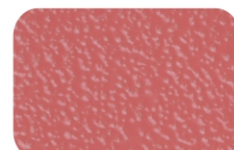
BLUE PINK (ST3091-HB)



MARWEL YELLOW (ST3181-HB)



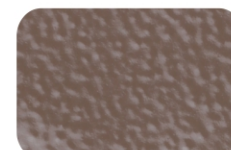
BEIGE (ST3141-HB)



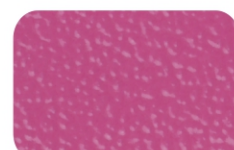
ROZE PINK (ST3070-HB)



GOLDEN YELLOW (ST3104-HB)



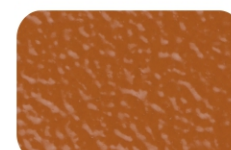
ANTI GREY (ST3194-HB)



DARK PINK (ST3093-HB)



RAL 1017 YELLOW (ST3082-HB)



WOOD BROWN (ST3183-HB)



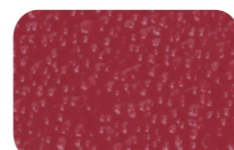
RUBBIN (ST3039-HB)



DEEP OARNGE (ST3117-HB)



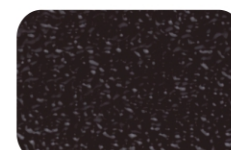
NUT BROWN (ST3018-HB)



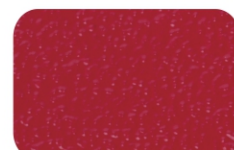
ELECTRIC RED (ST3184-HB)



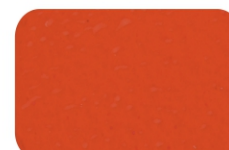
PISTAL ORANGE (ST3023-HB)



CHOCOLATE BROWN (ST3129-HB)



RAL3027 RED (ST3100-HB)



RAL2009 ORANGE (ST3195-HB)



B.C.B. (ST3108-HB)



SIGNAL RED (ST3150-HB)



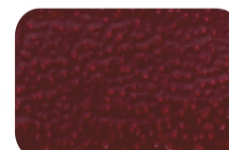
ORANGE (ST3163-HB)



BLACK (ST3406-HB)



P.O. RED (ST3111-HB)



WINE RED (ST3087-HB)



MAROON (ST3012-HB)

Caters to Furniture, Electrical, Agricultural, Appliances, Architectural, Automotive & General Metal Products.

EMBRACE PRETTY PINK TO FEEL CALM

We love pink for its pretty appeal. It certainly has peaceful vibes. Pink is a happy and hopeful colour. Choose pink, if you would like a calm and comforting effect.

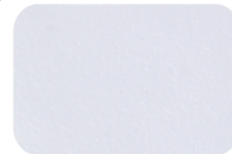


Caters to Furniture, Electrical, Agricultural, Appliances, Architectural, Automotive & General Metal Products.

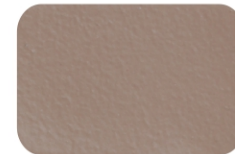


POWDER COATINGS

TEXTURE



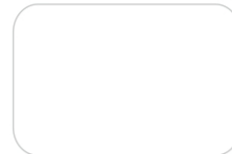
RAL9003 WHITE (TX4046-HB)



BEIGE (TX4038-HB)



PRESIDENT BLUE (TX4003-HB)



OFF WHITE (TX4022-HB)



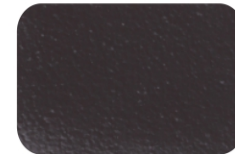
WOOD (TX4512-PP)



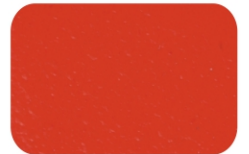
BLUE (TX4009-HB)



LIGHT IVORY (TX4001-HB)



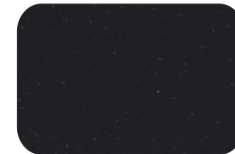
BROWN (TX4036-HB)



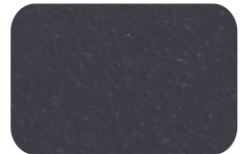
ORANGE (TX4023-HB)



ROYAL GREY (TX4026-HB)

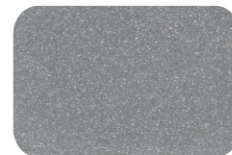


BLACK (TX4002-HB)



GRAPHITE GREY (TX4010-HB)

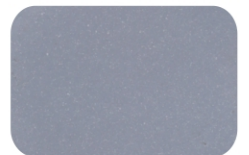
SPECIAL



SPARKLE SILVER (SP7159-HB)

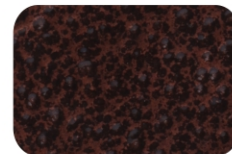


BRIGHT SILVER (SP7160-HB)

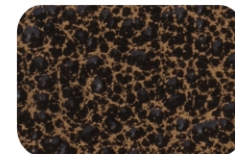


SPECIAL SILVER (SP7151-HB)

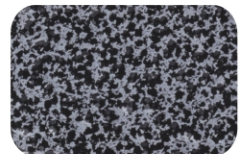
ANTIQUÉ



COPPER (AT7120-HB)



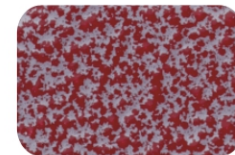
GOLD (AT7119-HB)



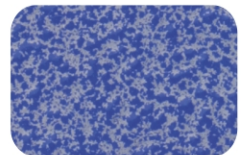
SILVER (AT7118-HB)



WHITE (AT7121-HB)



RED (AT7122-HB)



BLUE (AT7123-HB)

METALLIC



BLACK (MT7510-HB)



RED (MT7511-HB)



BLUE (MT7512-HB)

THIS CARD REPRESENTS OUR STANDARD SHADES BUT SLIGHT VARIATION MAY OCCUR.



PRODUCTS

Pure Polyester

Industrial polyester is based on polyester resins with good weather and UV resistance and on pigments chosen for their good heat resistance and light fastness.

They are therefore particularly suitable for painting outdoor products such as: agricultural machinery, cycles, motorbikes, car accessories and road signs.

Epoxy Polyester

NiceCoat's thermosetting powder coatings based on epoxy and polyester resins have excellent mechanical characteristics, good resistance to chemical agents and yellowing.

They are particularly suitable for the coating of indoor products such as: radiators, household appliances, fridges, dishwashers, washing machines, toys, shelving and metal office furniture.

Pure Epoxy

NiceCoat's thermosetting powder coatings based on epoxy resins are specifically formulated for metal products used mainly in design. These powder coatings provide excellent performance in terms of aesthetics and durability.

They are particularly suitable for the coating of metal office furniture, machine tools, taps and bathroom accessories, boilers, stoves and lighting appliances and all those products which are located indoors and in covered places.

Research & Development

We have a state of the art laboratory with sophisticated equipments, which are aptly used by our Research & Development Department to develop new products according to the market trends and sometimes to change the market trends themselves. In the lab coated powders are tested for colour, gloss, impact, bend test, ericsson cupping, salt spray test, lab extruders & mills, etc. Moreover, the various aspects and processes of the products are analysed from time to time to keep pace with the changing scenario of the trade globally.

Advantages

- No primer needed.
- Solvent free, hence negligible amount of VOCs are released into the air.
- Lower operating costs with minimum time and fast production.
- Attractive, durable and high quality finish.
- No paint runs required.
- Overspray powder is recovered and reused, so waste is minimal, can be disposed easily, economically and safely.
- A wide range of colour effects and textures.
- The Coating Powders have a very high mechanical strength.
- Pollution-free & environment-friendly, protects the environment.
- No curing time required beyond the cool-down period.
- The Coating Powders have got high corrosion resistance.

Important Instructions & good practices

- Metallic powders like Antique Copper & Gold require clear over coating for better durability. They should be utilized with the changing voltage set to minimum.
- For uniform finish & pattern of Antique / Structure / Texture Shades the oven temperature should be above 140°C at the time of loading and coating, the thickness should be more than 70-80 microns (depends on colour shades).
- Do not mix powders from two different suppliers.
- Due attention should be paid to the flow of clean, dry, oil free compressed air supply at the recommended pressure.
- The oversprayed powder should be kept clean away from dirt and moisture. It should be sieved prior to mixing in proportionate quantities with the fresh powder in order to obtain consistent results.
- Ensure that powders are always stored in a cool and dry place in closed sealed containers.
- For any type of powder coating it is essential to do seven tank process, i.e. the pre-treatment. Ensure that the pre-treatment chemicals are in good condition and of the correct strength.
- Adequate earthing of the job and the equipments is very essential.

Disclaimer

- The coated articles on this card are representative only and may vary slightly in actual gloss, colour and texture. We do not accept any responsibility for variation.
- We encourage you to test the product in order to determine suitability for your specific needs. Since the conditions of product application are beyond our control, no warranty is expressed.
- NiceCoat endeavors to stock all products shown. However, we may add or delete products from our inventory / product range as the market conditions demand.



Get in Touch:

Parth Chemtech

Manufacturers of All Types of Coating Powders

Plot No. G-1340, Lodhika G.I.D.C., Kishan Gate, ☎ +91 2827 287009

Kalawad Road, METODA - 360021,

✉ info@nicecoatindia.com

Dist. Rajkot (Gujarat - India)

🌐 www.nicecoatindia.com